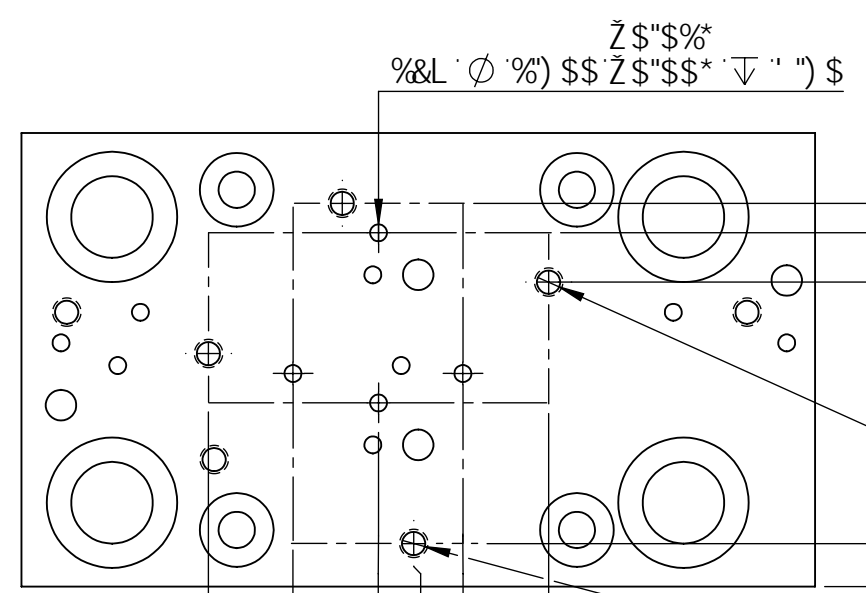


F9J 6C BG				
F9J	89G7 F-DHC B	85H9	6M	5DDF
8	7F95H98 85H5G<99HHC A 5H7 < F9J 8 6F57?9H	\$ #S- #8&S&	7<	



G99 J H&%A 5BI 5@: CF  
A C I BHB; D5H9FB 89H5 @G

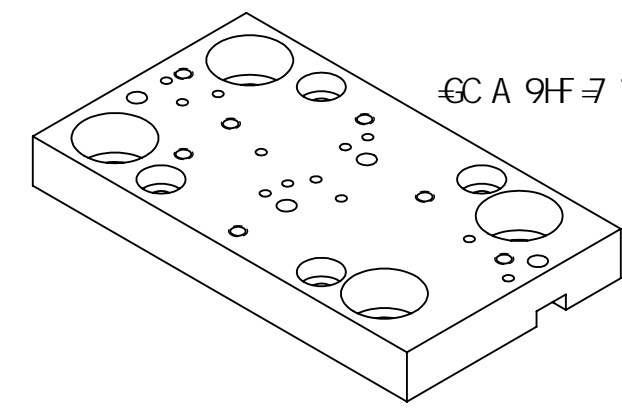
JH&%\$a a  
A C I BHB; D5H9FB 5

JH&%\$a a  
A C I BHB; D5H9FB 5

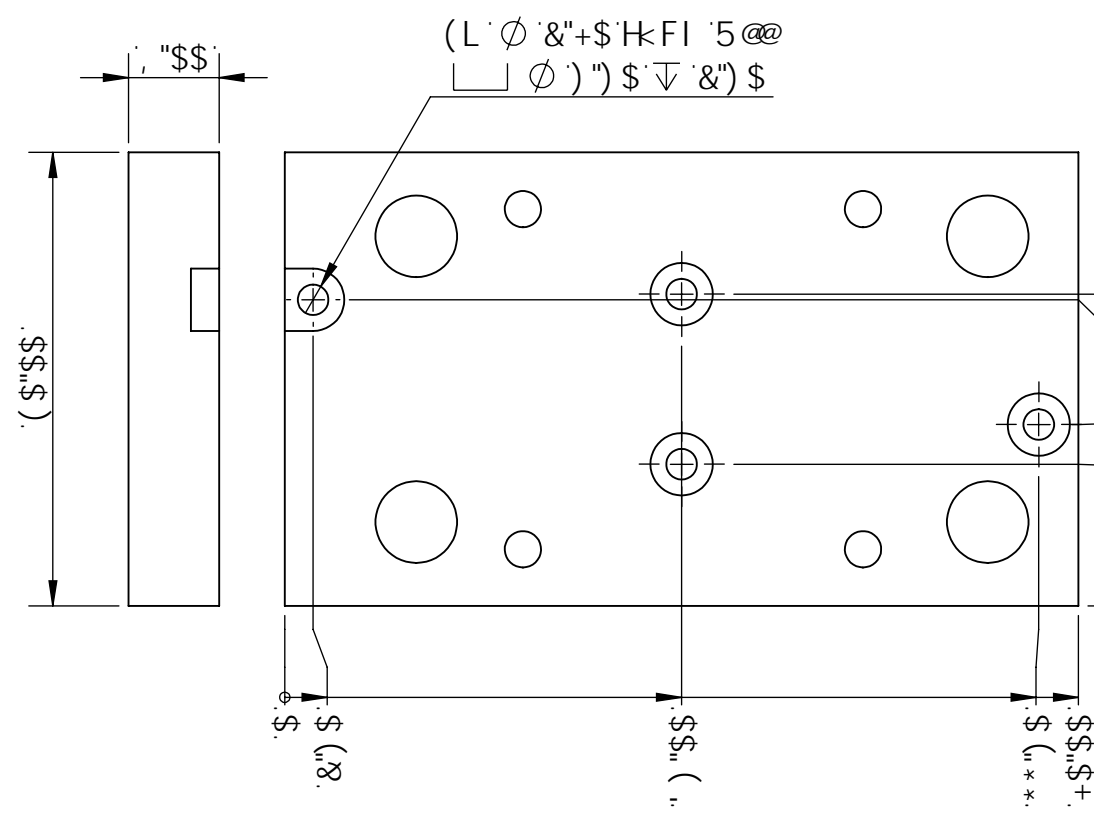
(L'A \*A C I BHB; <C @G: CF  
A 9HF 7 C DH7 5@H56@  
&I) \$a a <C @D5H9FB

(L'A 'G<7GA C I BHB; <C @G  
' \$a a GE I 5F9<C @D5H9FB

JH&%&\*a a  
A C I BHB; D5H9FB 6

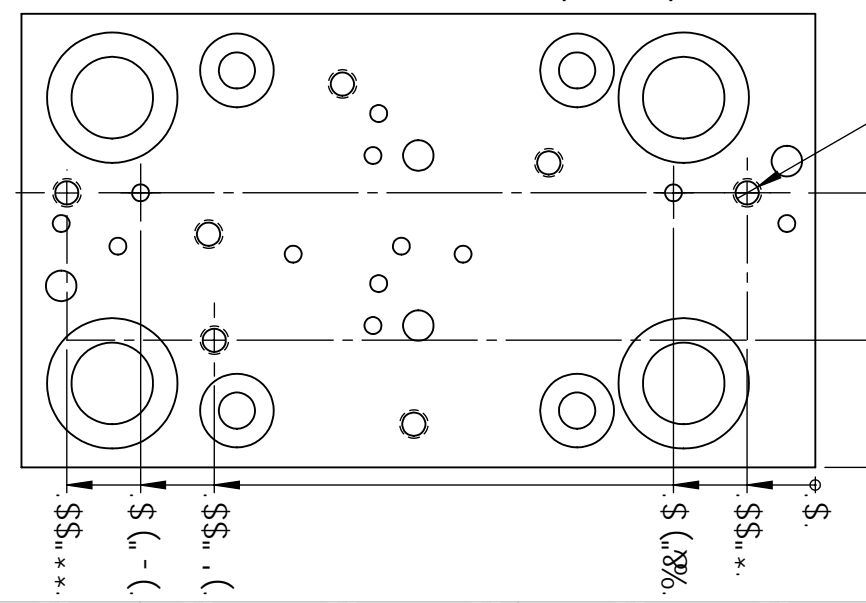


6C A 9HF 7 J 9K BC HHC G7 5 @



(L'φ '&+\$'HKFI 5@@  
□ φ ') '\$'↓ '&') \$

G5A 9HC D'J 9K  
D5H9FB <≠ <@≠ <H



D5FHBI A 69F	A 5HF-5@	: -B-G<
(' \$%\$+!\$%)	*\$*%H* 5@ A B I A	BCB9
(' \$%\$+!%\$%)	*\$*%H* 5@ A B I A	6@57? 5BC8#98

CH: 9F A 5HF 5@G5J 5-@6@  
I DC B F9E I 9GH

DEC DF 9H5FM5B8 7CB: 89BH5@ H: 9B: CFA 5HC B 7CBH5 B98 B Hk 68C 71A 98H 6H: 9GC @9DFC D9FHC: A 7FCB 4I G52@7 8-67 @G F928I D@7 5HC B2CF 5BMC H: 9F I 09 B D5FHCF 5G5 K <C @9K H: C I H: 9DF C F K F H9B D9FA 6GC B C: A 7FCB 4I G52@7 GDFC <6+98*		I B @9GC H: 9K 69D97 = 98. 1 8 A 9BGC BG5F9 B A @A 9HFG QWYg 1 5 @8 A 9BGC BG5DD@MHC : B 6<98 D5FH 1 6F95? 5 @G<5FD98: 9G \$%)!\$%) a a HC @9F5B7 9G L'L ±\$%) (\$\$\$) Q L'LL ±\$%) (\$\$\$) Q L'LL ±\$%) (\$\$\$) Q 5B: @G ±\$%)		A 5HF-5@ G99 A 5HF 5@H56@ <95HF 95H 98H G F: 579 % BCB9 : B 6< ✓ σa		8F5K B 7< 85H9 \$: #S- #8&S& 7< 97?98 85H9. 9B: 5DDF" 85H9.		A 7FCB 4I G5 DF97 4G<B A C H C B GC H C B G k k k a Mvcbj i gJ Wba H99 585 DH9F 65G9 D@5H9H56@J H&%z 85H5G<99H		8K: BC" ( ' \$%\$+ F9J 8	
8C BCG7 5@98F5K B:		6 A 9HF 7		H: F8 5B: @		G7 5@ (%) .% % #F		G<99H			