

Module Linear Stage | MLS-20

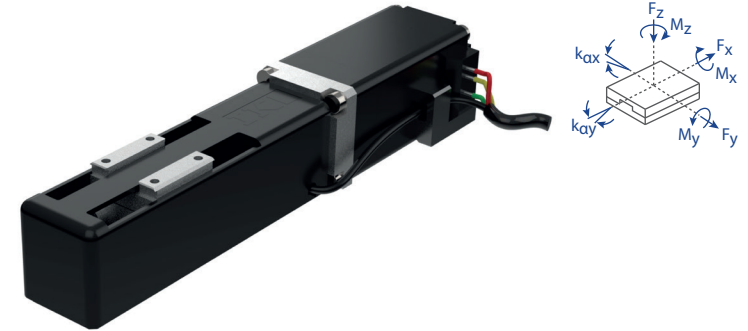
www.micronixusa.com | info@micronixusa.com | phone: +1 (949) 480 0538 | fax: +1 (949) 480 0538

The MLS-20 is a compact precision linear stage with 20mm or 40mm travel range. The use of a ball screw and linear ball bearing allows for smooth travel. The MLS-20 stage is compatible with the MMC-200 and NanoDrive controller.

KEY FEATURES

- 20mm travel or 40mm travel (60mm on request)
- Load up to 0.6kg
- Low profile, 20mm height
- 1mm pitch ball-screw

Load, max	F_x [N]	F_y [N]	F_z [N]	M_x [N·m]	M_y [N·m]	M_z [N·m]	k_{ax} [μ rad/N·m]	k_{ay} [μ rad/N·m]
PM-002	10	10	10	0.4	0.4	0.4	-	-



TECHNICAL DATA

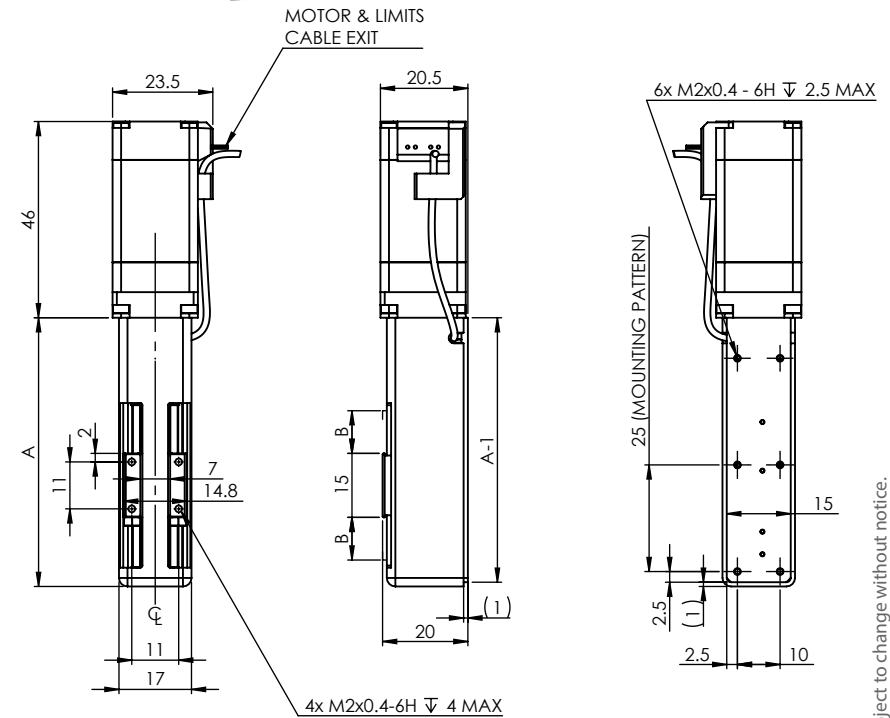
Travel range [mm]	20	40
Straightness / Flatness [μ m]	± 2	± 3
Pitch [μ rad]	± 200	± 400
Yaw [μ rad]	± 200	± 400
Weight [g]	150	160
Motor option	Stepper Motor	
Speed, max [mm/s]	12.5	
Encoder option	None (open loop)	
Resolution, typical [μ m]	0.1	
Repeatability, bi-directional [μ m]	± 3	
Repeatability, uni-directional [μ m]	3	
Materials	aluminum carriage, steel base and bearing	

ORDERING INFORMATION

MLS-20 - 2 0 1 0

DRIVE	Stepper Motor	2
TRAVEL	20mm	1
	40mm	2
	*60mm	3
ENCODER	None	0
LIMIT SWITCH	Magnetic	1
ENVIRONMENT	Atmospheric	0

* on request



* all dimensions are in millimeters
* 20mm travel version shown

Travel	A	B
20	63	10
40	83	20
60	103	30

Specifications are subject to change without notice.