

Precision Positioning Table | MLS-20 NEW

www.micronixusa.com | info@micronixusa.com | phone: +1 (949) 480 0538 | fax: +1 (949) 480 0538

The MLS-20 is a compact precision linear stage with 20mm or 40mm travel range. The use of a ball screw and linear ball bearing allows for smooth travel. The MLS-20 stage is compatible with the MMC-200 and NanoDrive™ controller.

KEY FEATURES

- 20mm travel or 40mm travel (60mm on request)
- Load up to 0.6kg
- Low profile, 20mm height
- 1mm pitch ball-screw

TECHNICAL DATA

Travel range [mm]	20	40
Straightness / Flatness [μm]	± 2	± 3
Pitch [μrad]	± 200	± 400
Yaw [μrad]	± 200	± 400
Weight [g]	150	160
Motor option	Stepper Motor	
Speed, max [mm/s]	12.5	
Encoder option	None (open loop)	
Resolution, typical [μm]	0.1	
Repeatability, bi-directional [μm]	± 3	
Repeatability, uni-directional [μm]	3	
Materials	aluminum carriage, steel base and bearing	

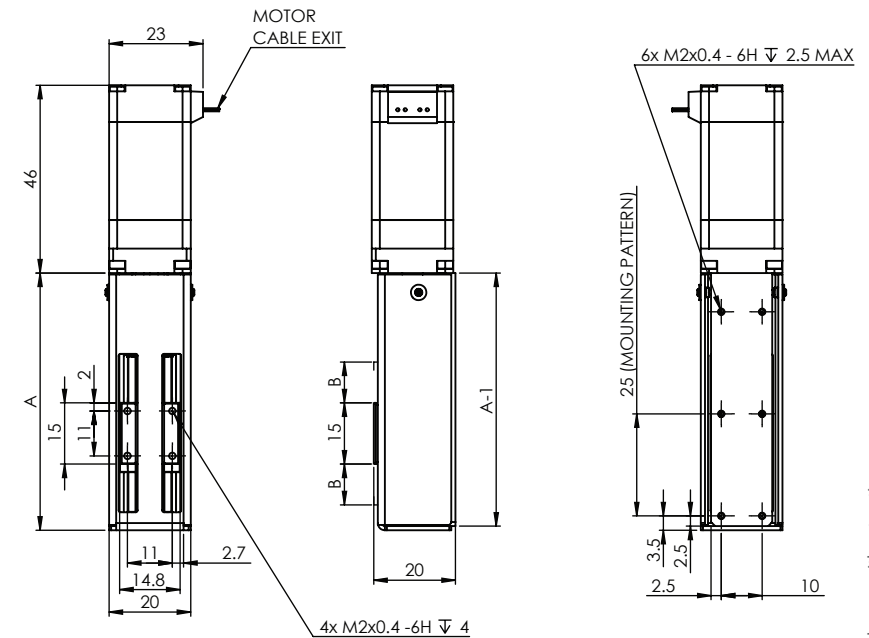
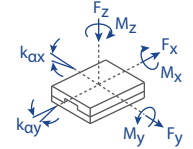
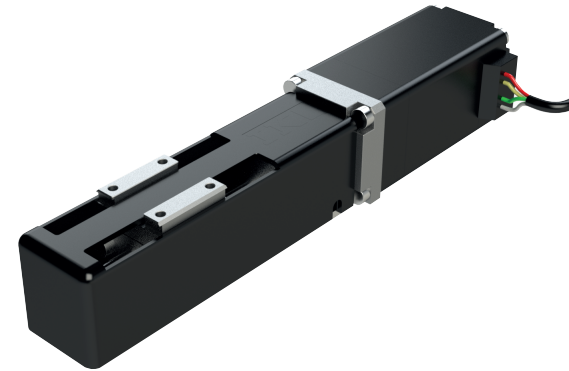
ORDERING INFORMATION

MLS-20 - **2** | | **0** | **1** | **0**

DRIVE	Stepper Motor	2	1	0	1	0
TRAVEL	20mm	1	2	3		
	40mm	2				
	*60mm	3				
ENCODER	None	0				
LIMIT SWITCH	Magnetic	1				
ENVIRONMENT	Atmospheric	0				

* on request

Load, max	F_x [N]	F_y [N]	F_z [N]	M_x [N·m]	M_y [N·m]	M_z [N·m]	k_{ax} [$\mu\text{rad/N·m}$]	k_{ay} [$\mu\text{rad/N·m}$]
PM-002	10	10	10	0.4	0.4	0.4	-	-



* all dimensions are in millimeters
* 20mm travel version shown

Travel	A	B
20	63	10
40	83	20
60	103	30

Specifications are subject to change without notice.