

# Modular Motion Controller | MMC-200

The MMC-200 is a stepper motor controller/driver. It allows speeds beyond 10 mm/s (leadscrew pitch dependent) with closed loop resolutions down to 50 nm. Multiple units can be stacked as a compact multi-axis module and interface with a computer via a single USB 2.0 or RS-485 cable. MICRONIX Motion Control Language allows for easy programming through simple ASCII commands.

## KEY FEATURES

- Integrated controller/driver for stepper motor stages
- Compact, modular design allows for bench-top or 2U height rack mounting
- Closed loop resolution down to 50 nm (dependent on encoder)
- A quad B differential or sin/cos analog encoder feedback
- USB 2.0, RS-485 interface (one interface for up to 16 axes)
- Windows GUI and LabVIEW VI

## TECHNICAL DATA

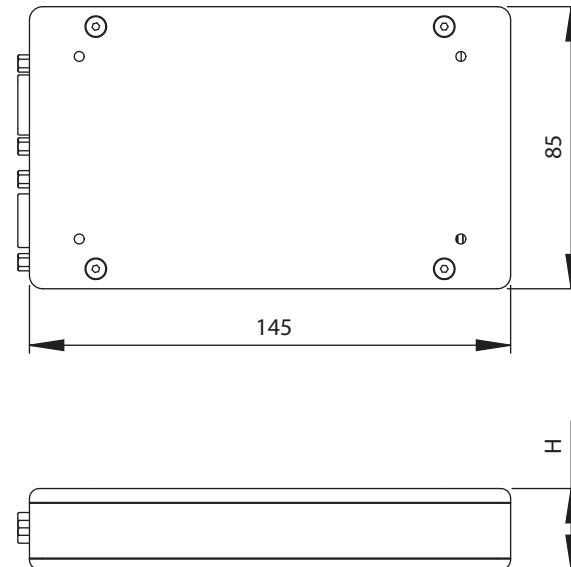
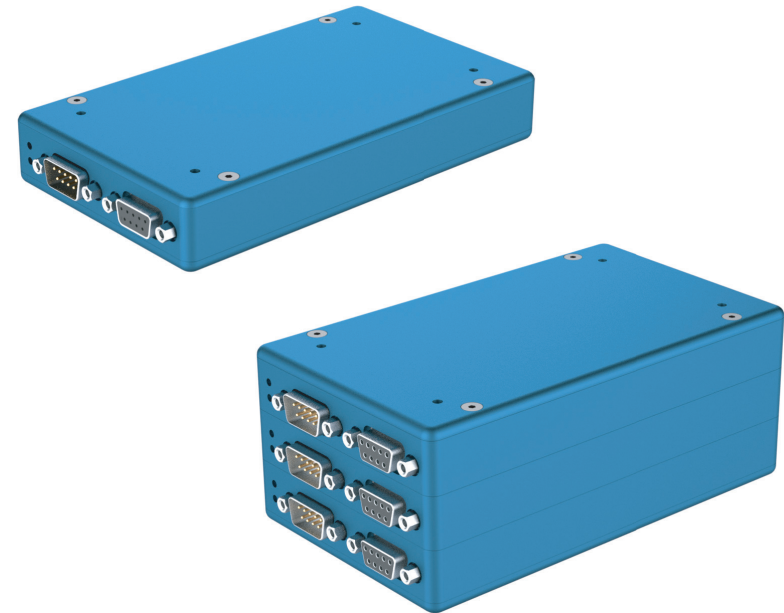
Axes	1, stackable up to 16
Motor type	Stepper Motor
Interface	USB 2.0, RS-485
Commands	ASCII commands
Power supply	Regulated 24 V DC (1 A per axis)
Speed, max	10 mm/s (stage dependent)
Resolution	100 nm (open loop), 50 nm (closed loop)
Trajectory mode	Trapezoidal velocity profile
Trajectory update frequency	1 kHz
Servo clock frequency	5 kHz
Program storage	16 storable programs
Enclosure dimensions	L145 x W85 x H25 mm
Software	Windows GUI, LabVIEW VI

## ORDERING INFORMATION

MMC-200- 0 0 0 0

AXES	1	2	3	4	5	6
1 Axis .....	1					
Up to 16 Axes <sup>†</sup> .....	#					
POWER SUPPLY	1	2	3	4	5	6
50 W .....	1					
65 W .....		2				
ENCODER INTERFACE	0	1	2	3	4	5
Analog (1 V <sub>pp</sub> ) .....	0					
Digital (RS-422) .....		1				

<sup>†</sup> please contact support for larger stacks



Axes	H
1	24.4
2	41.2
3	58
4	74.8
5	91.6
6	108.4

Specifications are subject to change without notice.