

Elevation Stage | ES-50PM

www.micronixusa.com | info@micronixusa.com | phone: +1 (949) 480 0538 | fax: +1 (949) 480 0538

The ES-50PM piezo elevation stage is designed for applications with limited space conditions. The ES-50PM stage is driven by a patented multi-phase piezo motor. Crossed roller bearings assure smooth motion and high stiffness. The ES-50PM allows for a highly rigid XZ or XYZ setup without the need for adapter brackets when combined with the PPS-60, VT-50, and PPX-50 series of linear stages. Versions capable of operation in vacuum (10^{-9} mbar) are available. The ES-50PM is compatible with the MMC-100 and MMC-110 controller.

KEY FEATURES

- Travel range of 10 mm
- 2 nm closed loop encoder resolution
- Load capacity up to 1 kg (with constant force spring)
- Crossed roller bearings
- Mechanical limit switch option
- Vacuum and non-magnetic versions available

TECHNICAL DATA

Travel range [mm]	10		
Straightness / Flatness [μ m]	± 4		
Pitch [μ rad]	± 300		
Yaw [μ rad]	± 300		
Weight [g], Open Loop	160		
Weight [g], Closed Loop	165		
Motor option	Piezo Motor		
Speed, max [mm/s]	> 1 (MMC-100), > 5 (MMC-110)		
Encoder option	None (open loop)	Analog (1 V _{pp})	Digital (RS-422)
Resolution, typical [nm]	1	10	2
Repeatability, bi-directional [nm]	n/a	± 50	± 50
Repeatability, uni-directional [nm]	n/a	50	50
Materials	aluminum body, steel bearing (other materials i.e. stainless steel, titanium, etc. available upon request)		

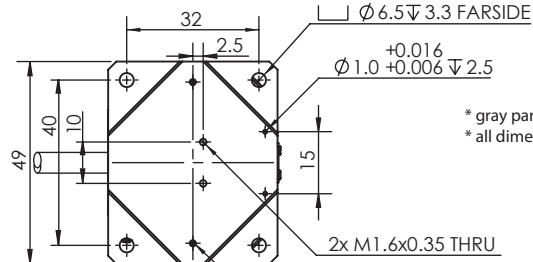
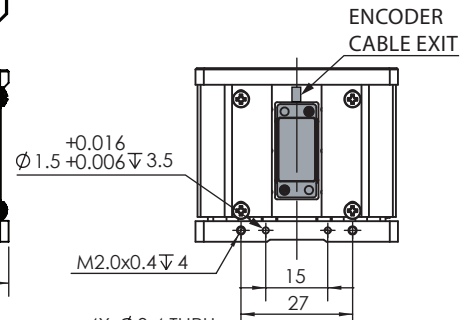
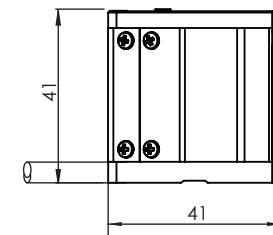
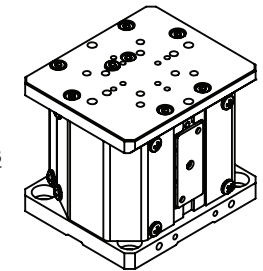
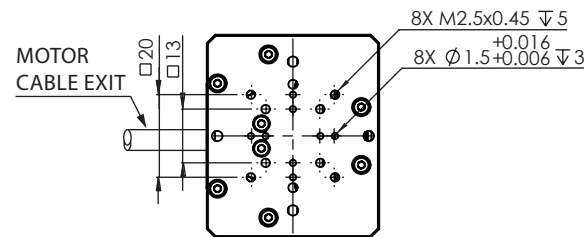
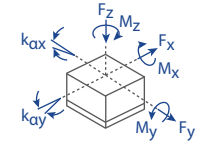
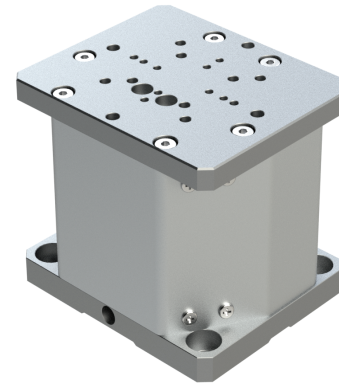
ORDERING INFORMATION

ES-50PM- 1 1

DRIVE	Piezo Motor, PM-003	1
TRAVEL	10 mm	1
ENCODER	None	0
	Analog (1 V _{pp})	2
	Digital (RS-422)	3
LIMIT SWITCH	None	0
	Magnetic [†]	1
ENVIRONMENT	Atmospheric	0
	High Vacuum, 10^{-6} mbar	6
	Ultra-High Vacuum, 10^{-9} mbar	9
	Non-Magnetic	M

[†] open loop only

Load, max	F _x [N]	F _y [N]	F _z [N]	M _x [N-m]	M _y [N-m]	M _z [N-m]	k _{ax} [μ rad/N-m]	k _{ay} [μ rad/N-m]
PM-003	5	5	10	1	1	1	-	-



* gray parts for closed loop versions only
* all dimensions are in millimeters

Specifications are subject to change without notice.