

The MMC-ETHERNET is a PoE+ compatible powered device that provides Ethernet TCP/IP communication to all standard MMC controllers. It can be used as a standalone module connected to an external MMC controller or it can be stacked with an MMC controller for an integrated Ethernet solution. The MMC-ETHERNET will facilitate all communication with the MMC controller(s) through a single Ethernet TCP/IP connection. A second Ethernet port with an integrated switch enables expansion without an additional Ethernet switch. The MMC-ETHERNET supports 10/100/1000 Mbps speeds and will utilize Micronix Motion Control Language for easy programming through simple ASCII commands.

## KEY FEATURES

- Expands existing MMC controllers with additional communication interface
- **Ethernet TCP/IP (10/100/1000 Mbps)**
- **IEEE 802.3at PoE+ compatible powered device**
- **Two Ethernet ports with an integrated switch for flexible connections to an existing Ethernet network**
- Compact, modular design allows for bench-top or 2U height rack mounting
- USB 2.0, RS-232/485, Ethernet interface (one interface for up to 16 axes)
- Windows GUI, and LabVIEW VI

## TECHNICAL DATA

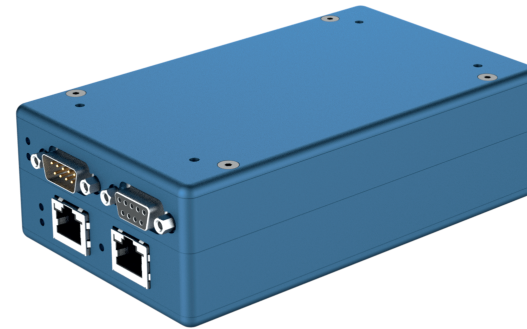
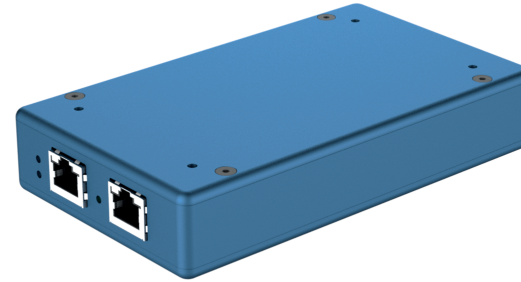
Axes	stackable with MMC controllers, up to 16
Interface	USB 2.0 RS-232 / RS-485 Ethernet 10/100/1000 Mbps
Commands	ASCII commands
Power supply	Regulated 24 V DC (1 A per axis) PoE+ (IEEE 802.3.at Compatible)
Enclosure dimensions	L145 x W85 x H28 mm
Software	Windows GUI, LabVIEW VI
Compatible MMC Controllers	MMC-10, MMC-100, MMC-110, MMC-200

## ORDERING INFORMATION **MMC-ETHERNET-**

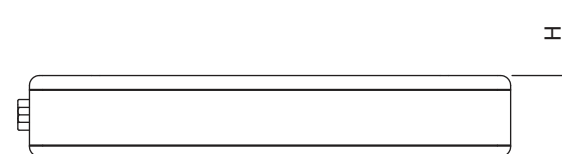
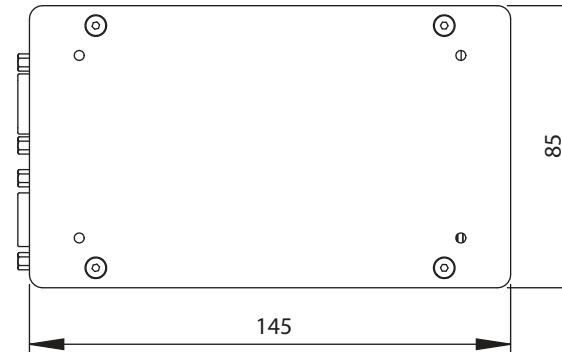
### CONFIGURATION

- Standalone .....S  
 Combined†.....C

† please contact support for configuration details



Axes	H
Standalone	27.47
w/ 1 MMC-XXX	44.27
w/ 2 MMC-XXX	61.07
w/ 3 MMC-XXX	77.87
w/ 4 MMC-XXX	94.67
w/ 5 MMC-XXX	111.47



Specifications are subject to change without notice.