

Precision Positioning Table | MLS-55 NEW

www.micronixusa.com | info@micronixusa.com | phone: +1 (949) 480 0538 | fax: +1 (949) 480 0538

The MLS-55 is a high speed, high response positioning table. The ultra low profile stage uses low maintenance recirculating ball bearings and a linear motor for smooth travel. The MLS-55 is designed to be operated in atmospheric environments where magnetic fields are tolerated. The MLS-55 stage is compatible with the Nanodrive controller.

KEY FEATURES

- 25mm travel (additional travel lengths available on request)
- 25nm absolute encoder resolution
- Load up to 5 kg
- Low profile, 14mm height

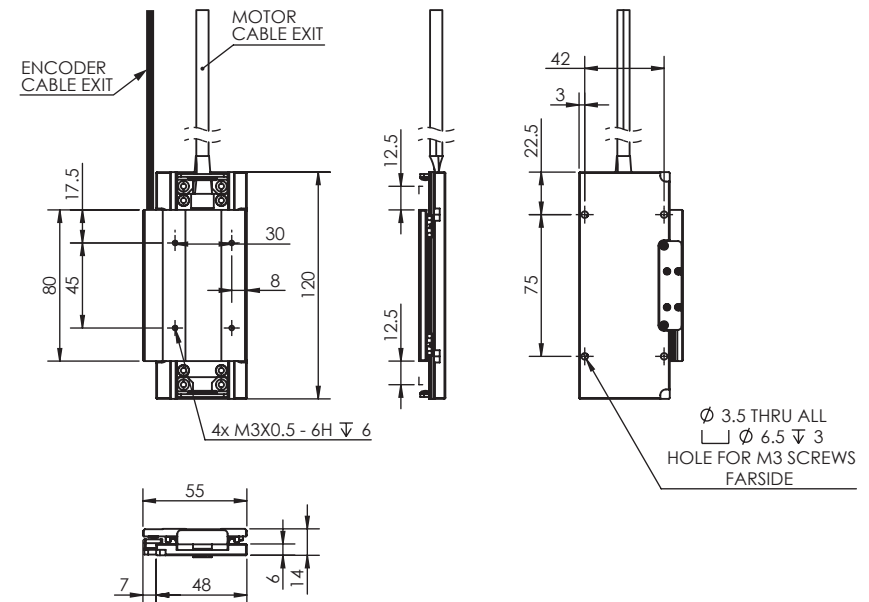
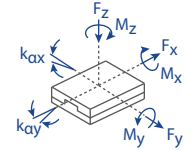
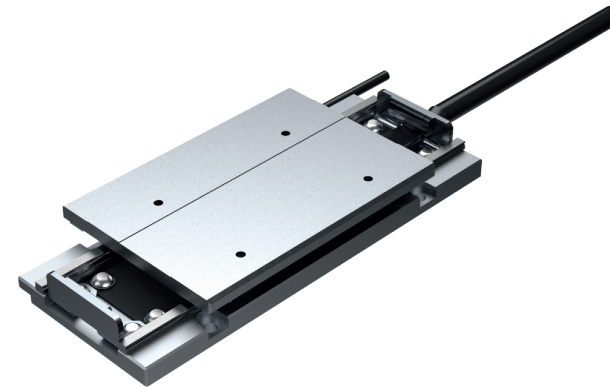
TECHNICAL DATA

Travel range [mm]	25
Straightness / Flatness [μm]	
Pitch [μrad]	
Yaw [μrad]	
Weight [g], Open Loop	420
Weight [g], Closed Loop	450
Motor option	Linear Motor
Speed, max [mm/s]	500
Encoder option	Absolute (BiSS C)
Resolution, typical [nm]	25
Repeatability, bi-directional [nm]	± 100
Repeatability, uni-directional [nm]	100
Materials	steel carriage and base, steel bearing, (other materials i.e. stainless steel, titanium, etc. available upon request)

ORDERING INFORMATION MLS-55 - 3 1 5 0 0

DRIVE	Linear Motor	3
TRAVEL	25mm	1
ENCODER	Absolute (BiSS C)	5
LIMIT SWITCH	None	0
ENVIRONMENT	Atmospheric	0

Load, max	F_x [N]	F_y [N]	F_z [N]	M_x [N-m]	M_y [N-m]	M_z [N-m]	k_{ax} [$\mu\text{rad/N-m}$]	k_{ay} [$\mu\text{rad/N-m}$]
PM-002	25 (peak)	20	50	1	1	1	-	-



Specifications are subject to change without notice.