

# Motion Controller | MMX-RACK

NEW

Preliminary Available Q2, 2026  
www.micronixusa.com | info@micronixusa.com | phone: +1 (949) 480 0538 | fax: +1 (949) 480 0538

MMX-RACK is a high-density motion controller platform capable of controlling up to 24 axes in a single, scalable system. Each axis is controlled by a dedicated MMX Control Card interconnected through the rack, allowing multiple motor types to be intermixed and managed through a single interface. Control Cards can be added or swapped in the field, providing easy access for system expansion, upgrades, or reconfiguration. The MMX Control Cards are sold separately; refer to its datasheet for additional details. An MMX-Ethernet card is included for seamless communication, making MMX-RACK a versatile and adaptable solution for complex multi-axis motion control systems.

## KEY FEATURES

- High Density Motion Controller
- Operates up to 24 axis simultaneously
- 19" 2U rack mountable unit
- Tabletop configuration available

## TECHNICAL DATA

Axes	up to 24
Motor Type	Piezo Motor, Stepper Motor, BLDC Motor, DC Motor
Interface	USB 2.0, Ethernet 10/100 Mbps
Commands	ASCII
Input Power	80-264 VAC
Inputs/Outputs	5 digital inputs (opto-isolated) 5 digital outputs (opto-isolated) 5 analog inputs 2 analog outputs
Motor Output	Control Card dependent
Enclosure Dimensions	L285 x W449x H88 mm
Software	Windows GUI, LabView VI, Python

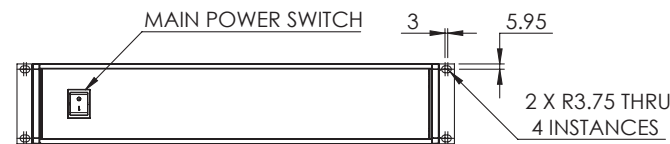
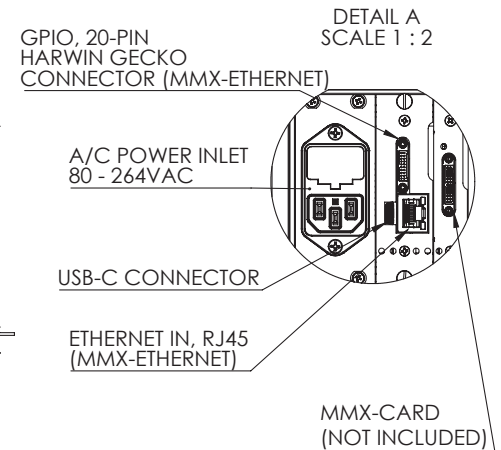
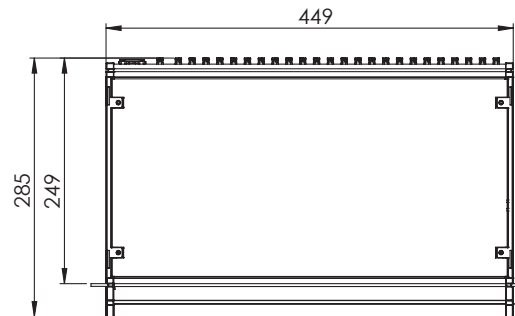
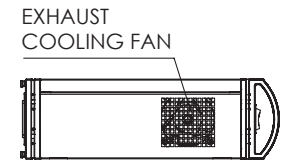
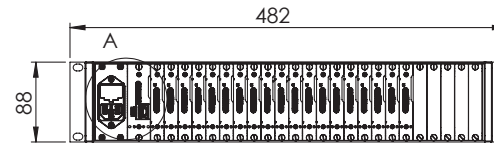
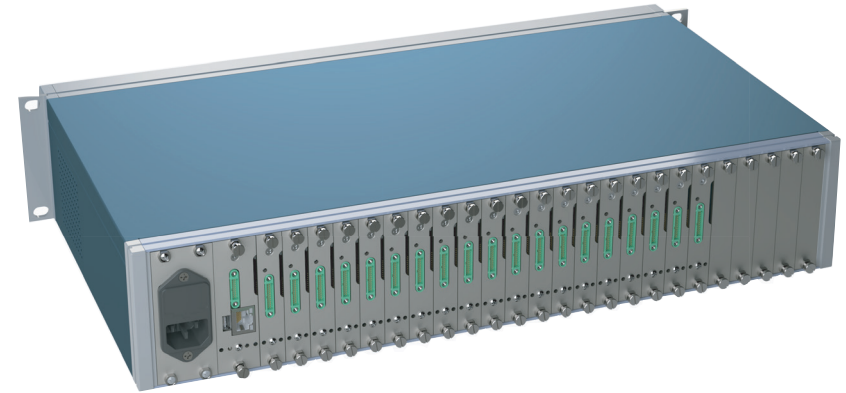
## ORDERING INFORMATION

MMX-Rack-     0 0

AXES	1.....	01
	2.....	02
	3.....	03
	:	:
	Up to 24 Axes.....	24

POWER SUPPLY **	500W (36V/13.9A).....	0
	1000W (36V/27.8A).....	1

\*\* Power supply dependent on stage specification.  
Micronix will choose proper supply.



• all dimensions are in millimeters

Specifications are subject to change without notice.