

# Modular Motion Driver | MMD-200

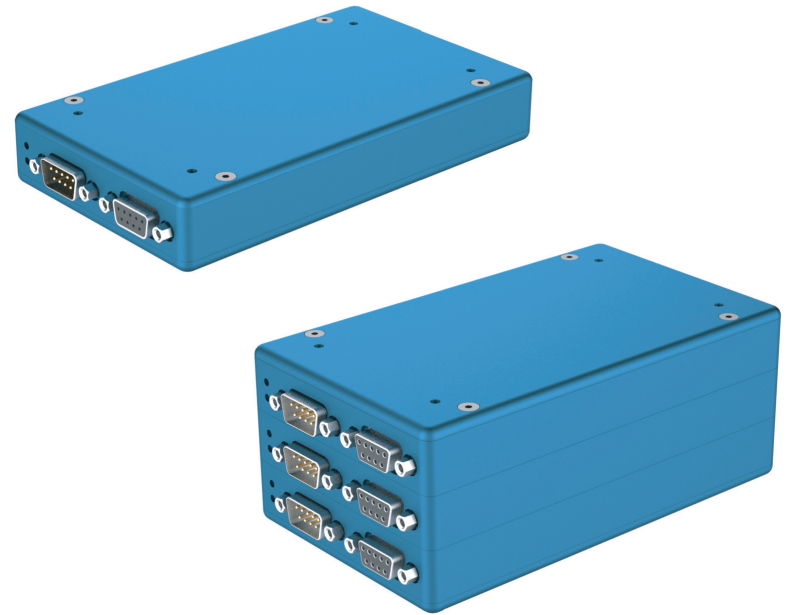
The MMD-200 is a low-cost stepper motor driver with a pulse-direction input. It allows speeds beyond 2 mm/s. Open and closed loop operations are available. The modular design of the MMD-200 allows for a mixed module stack with the MMC-200 controller that can interface with a computer via a single USB or RS-485 cable. MICRONIX Motion Control Language allows for easy programming through simple ASCII commands.

## KEY FEATURES

- Compact, modular design allows for bench-top or 2U height rack mounting
- MMD-200 and MMC-200 modules can be mixed in a stack
- Closed loop resolution down to 50 nm (dependent on encoder)
- A quad B differential or sin/cos analog encoder feedback
- Pulse and direction input signals via mini-DIN connector

## TECHNICAL DATA

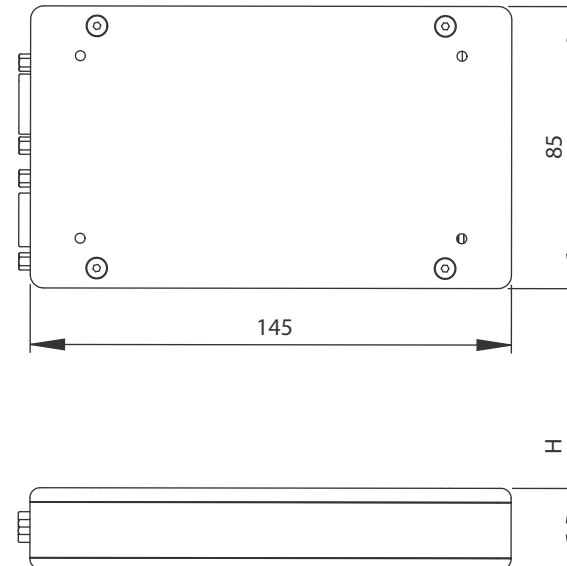
Axes	1, stackable up to 16
Motor type	Stepper Motor
Interface	USB 2.0 or RS-485 (configuration), mini-DIN (driver signals)
Commands	ASCII commands
Power supply	Regulated 24 V DC (1 A per axis)
Speed, max	> 2 mm/s
Resolution	100 nm (open loop), 50 nm (closed loop)
Servo clock frequency	20 kHz
Enclosure dimensions	L145 x W85 x H25 mm



## ORDERING INFORMATION

MMD-200- 0 0 0 0

AXES	1 Axis	Up to 16 Axes†
POWER SUPPLY	25 W	
ENCODER INTERFACE	Analog (1 V <sub>pp</sub> )	Digital (RS-422)



Axes	H
1	24.4
2	41.2
3	58
4	74.8
5	91.6
6	108.4

Specifications are subject to change without notice.

† please contact support for larger stacks