

Modular Motion Controller | MMC-300

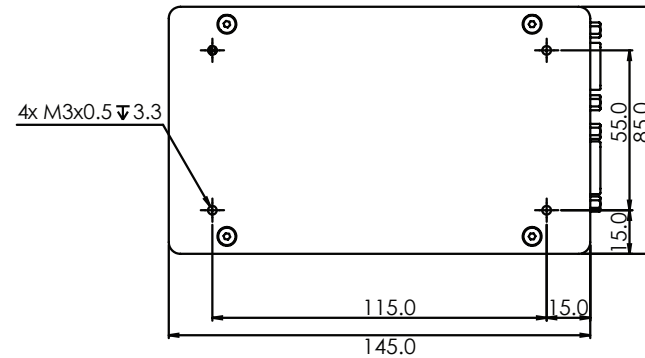
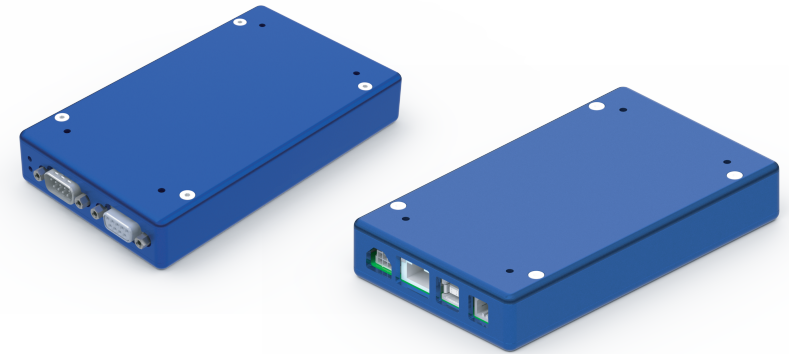
The MMC-300 is a BLDC, Brushed DC, and stepper motor controller. It allows speeds beyond 1000 mm/s on linear/stepper motors at resolutions of 1 nm. Multiple units can be stacked as a compact multi-axis module and interface with a computer via a single USB 2.0 or Ethernet cable. MICRONIX Motion Control Language allows for easy programming through simple ASCII commands.

KEY FEATURES

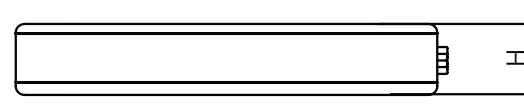
- Integrated controller for BLDC, DC, and stepper motor stages
- Compact, modular design allows for bench-top or 2U height rack mounting
- Closed loop resolution down to 1 nm (dependent on encoder)
- A quad B differential, Sine/Cosine analog, or BiSS-C absolute encoder feedback
- USB 2.0, Ethernet TCP/IP interface (one interface for up to 99 axes)
- Windows GUI and LabVIEW VI

TECHNICAL DATA

Axes	1, stackable up to 16
Motor type	3-Phase Brushless DC Motor Brushed Motor 2-Phase Bipolar Stepper Motor
Interface	USB 2.0 Ethernet TCP/IP (10/100/1000 Mbps)
Commands	ASCII commands
Power	+10 to + 60 VDC / 10 A peak
Speed, max	> 1000 mm/s (stage dependent)
Resolution	< 1 nm (closed loop)
Trajectory mode	Trapezoidal velocity profile
Trajectory update frequency	1 kHz
Servo clock frequency	10 kHz
Program storage	16 storable programs
Enclosure dimensions	L145 x W85 x H25 mm
Software	Windows GUI, LabVIEW VI



Axes	H
1	24.4
2	41.2
3	58
4	74.8
5	91.6
6	108.4

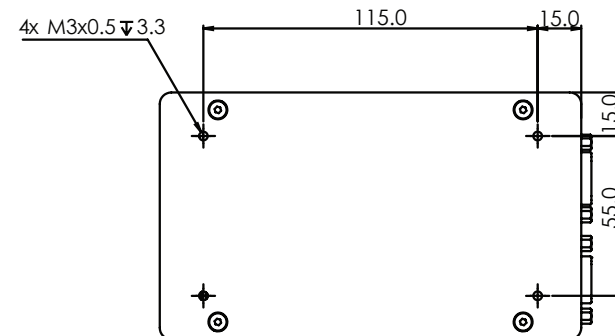


ORDERING INFORMATION

MMC-300- 0

AXES	1 Axis	2	3	4	5	6
POWER SUPPLY	60 W (24 V / 2.71 A)	1	1	1	1	1
ENCODER INTERFACE	Digital (RS-422)	0	0	0	0	0
	Analog (1 V _{pp})	1	1	1	1	1
	Absolute (Biss-C)	2	2	2	2	2
MOTOR INTERFACE	Stepper	2	2	2	2	2
	BLDC	3	3	3	3	3
	DC	4	4	4	4	4

† please contact support for larger stacks



Specifications are subject to change without notice.